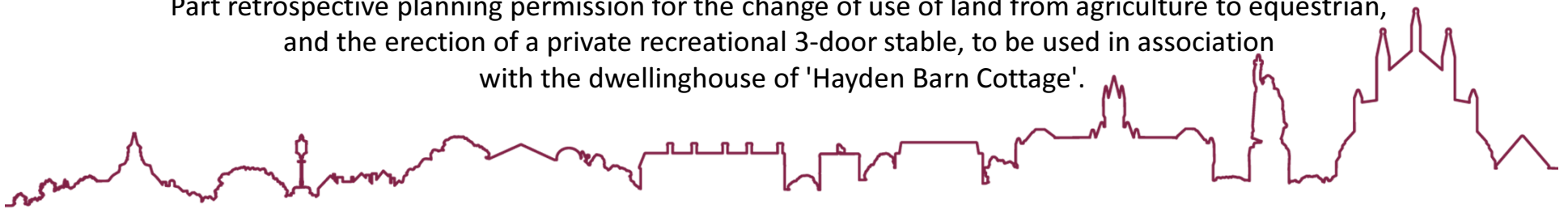


Hayden Barn Cottage, Hayden Lane, Warnford, SO32 3LF



Part retrospective planning permission for the change of use of land from agriculture to equestrian, and the erection of a private recreational 3-door stable, to be used in association with the dwellinghouse of 'Hayden Barn Cottage'.



Location Plan and Land Ownership



Views from Hayden Lane



- ☆ Location of the Stable
- ★ Location of the camera



Views from Hayden Lane



- ☆ Location of the Stable
- ☆ Location of the camera



Views looking in from neighbour's driveway entrance



- ☆ Location of the Stable
- ★ Location of the camera



Views looking in from neighbour's driveway entrance



- ☆ Location of the Stable
- ★ Location of the camera



Views from the Public Right of Way



- ☆ Location of the Stable
- ★ Location of the camera



Views from the woodland area east of the site



- ☆ Location of the Stable
- ☆ Location of the camera



Views from the entrance of the paddock

Proposed Track



Photo taken February 2020 – Submitted with Planning Statement

- ☆ Location of the Stable
- ★ Location of the camera



Views from the proposed new location. Far north corner of the paddock.



- ☆ Location of the Stable
- ☆ Location of the camera



View from neighbour's swimming pool area



Boundary hedge cut down by overhead line maintenance worker.

☆ Location of the Stable
★ Location of the camera



View from neighbour's garden



Boundary hedge cut down by overhead line maintenance worker.

☆ Location of the Stable
★ Location of the camera



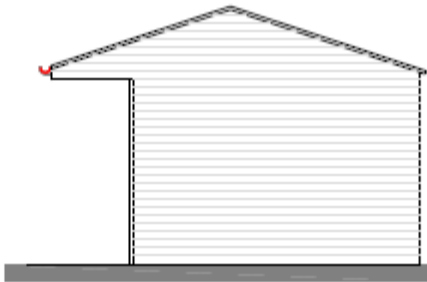
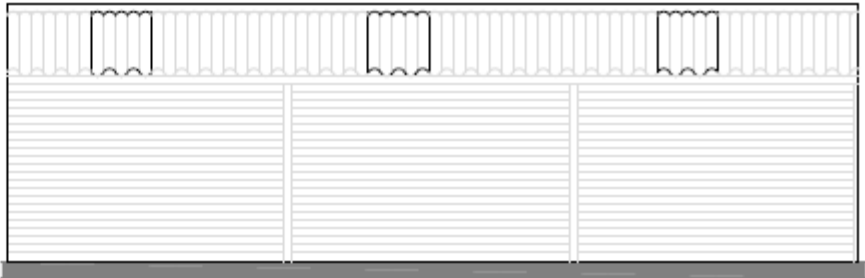
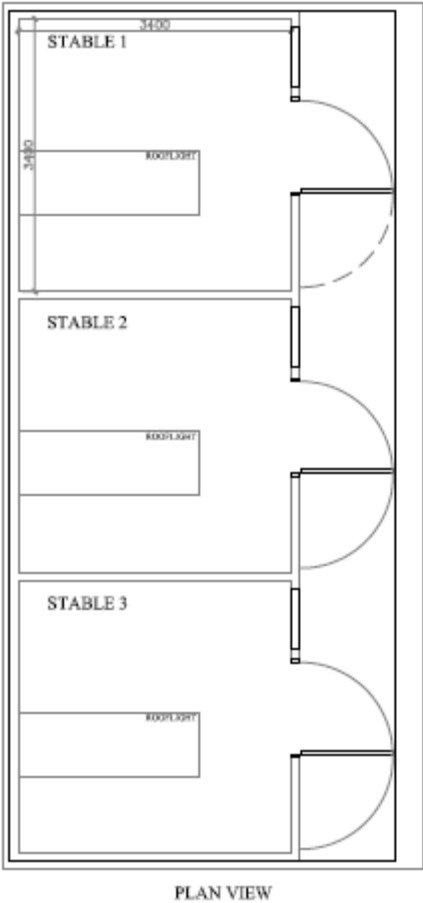
View from neighbour's land looking into the paddock.



- ☆ Location of the Stable
- ☆ Location of the camera



Plans



Approx.
10.2 meters Wide X
3.4 meters Deep X
3.2 meters High

PROPERTY: HAYDEN BARN COTTAGE
DRAWING TITLE: STABLES PLAN &
ELEVATIONS
SCALE: 1:50 @ A3
DATE: NOVEMBER 2019

Landscape height differences around the stable

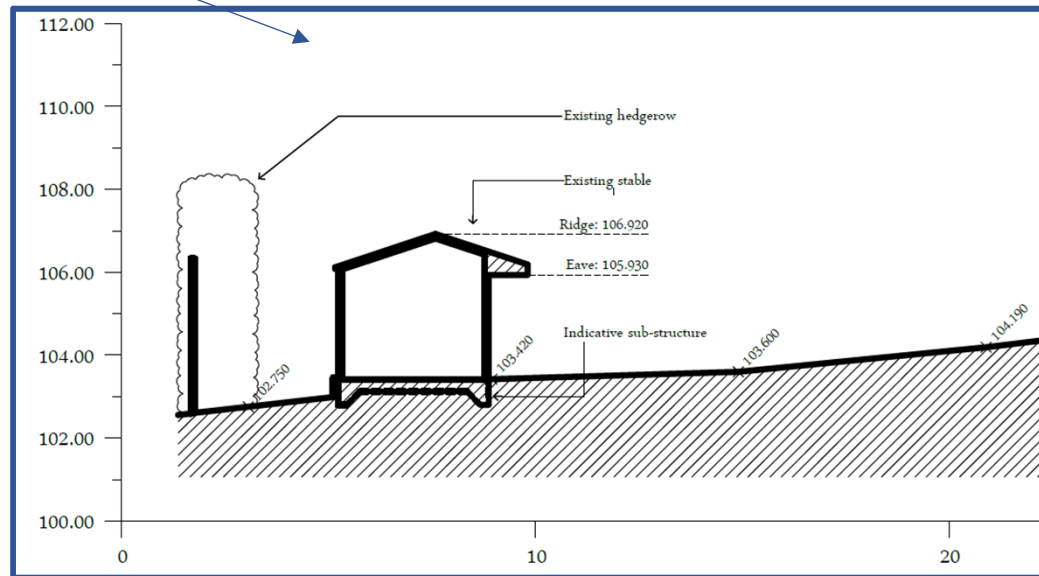
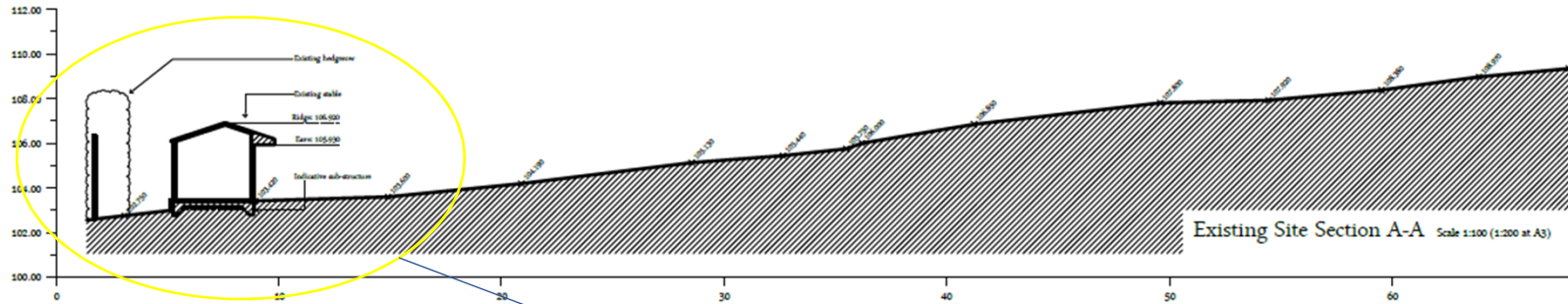
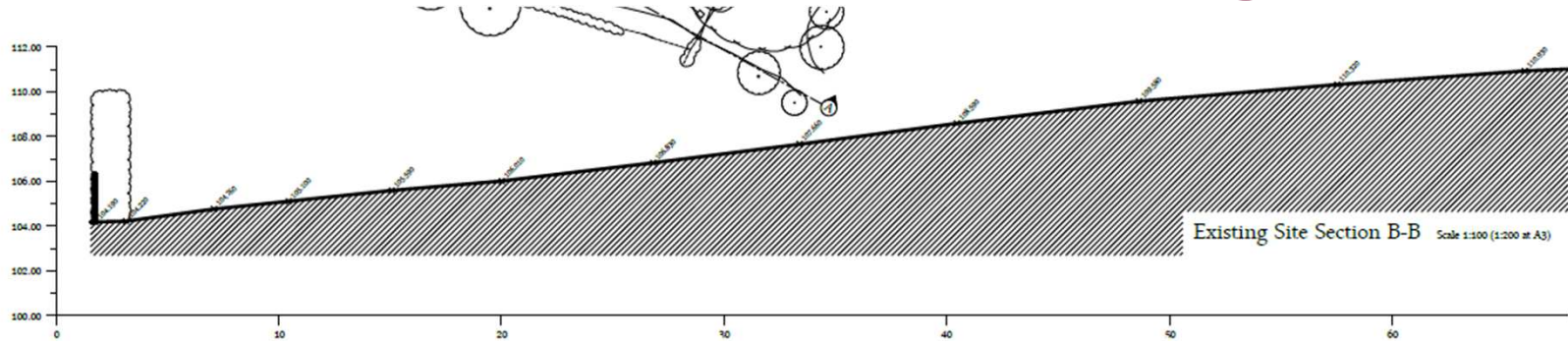


Photos taken January 2020

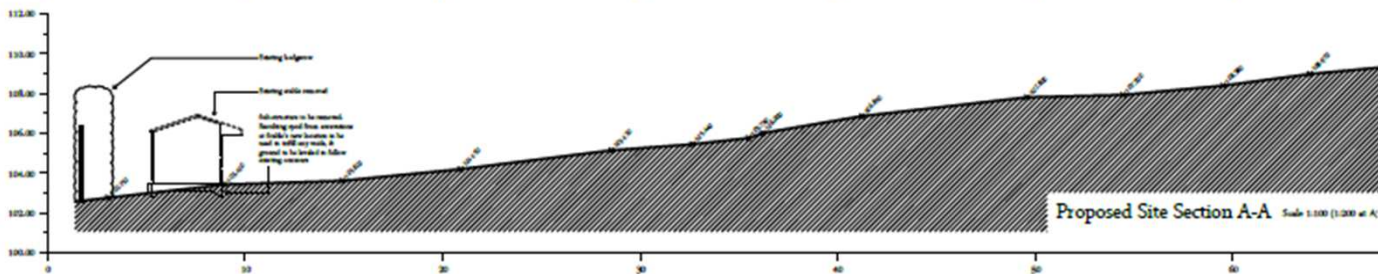
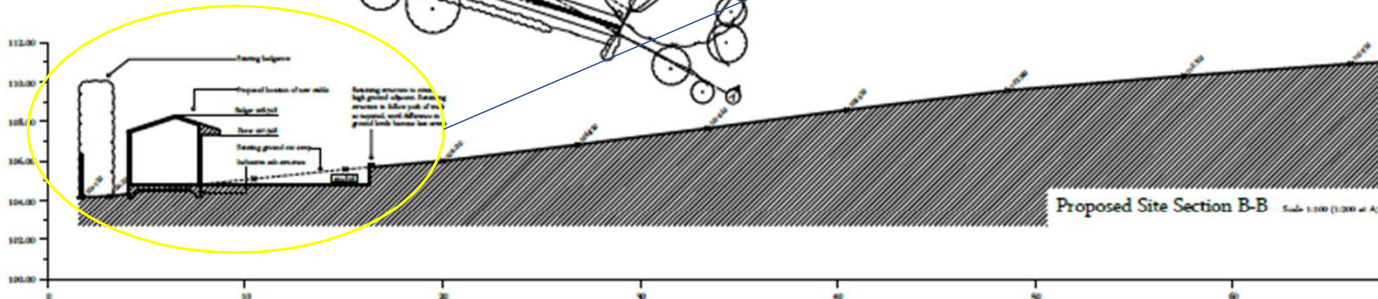
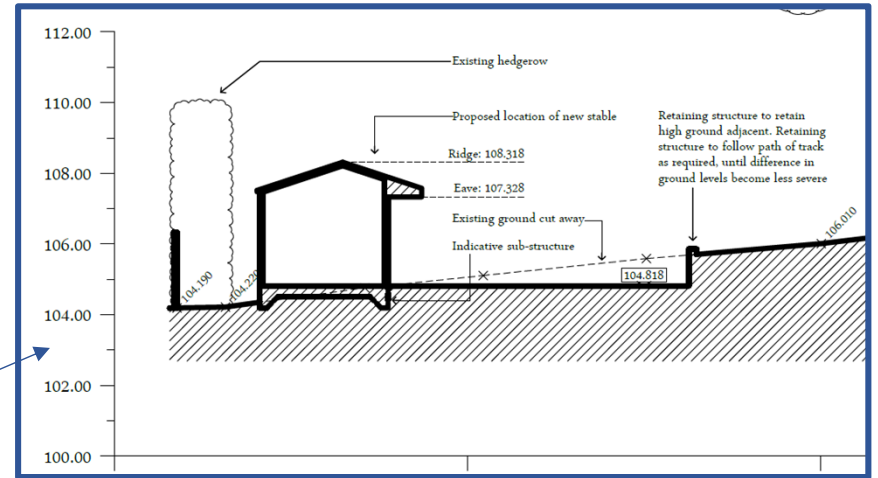
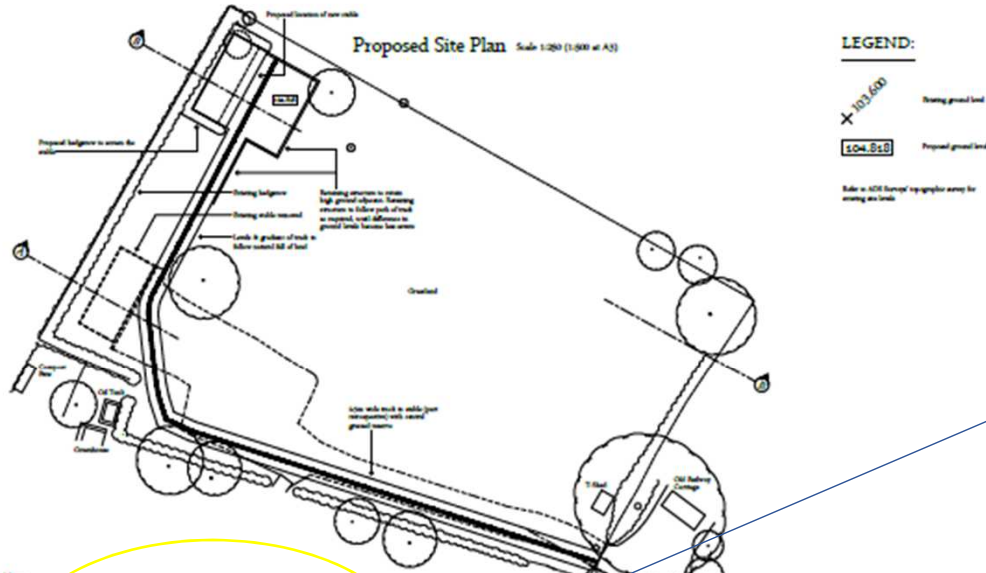


Behind the Stable

Level Plans - Existing



Level Plans - Proposed



The Stable Building



Photos taken January 2020



Proposed Block Plan

